



Stazione RN 2  
Country of origin:  
Italy



The makers identification plate was fitted on the rear of the transmitter case.

**DATA SUMMARY**

**Organisation:** Italian intelligence.  
**Design/Manufacturer:** Nova Radio, Milano.  
**Year of use/issue:** Unknown.  
**Purpose:** Agents and military intelligence.  
**Transmitter:** TRN 2  
**Circuit features:** Crystal/free running oscillator driving an RF amplifier. CW only.  
**Frequency coverage:** Not known.  
**RF output:** Estimated 20-25W  
**Valves:** PE 06/40 (807) or Italian equivalent, oscillator valve type unknown.  
**Power Supply:** ARN 2  
**AC Mains:** 110-125-205-220V  
**Rectifier valve:** Unknown.

| Size (cm):       | height | length | width (Estimated). |
|------------------|--------|--------|--------------------|
| <b>Suitcase:</b> | 40     | 28     | 65                 |
| <b>TRN 2:</b>    | 25     | 20     | 36                 |
| <b>ARN 2:</b>    | 25     | 20     | 24                 |

**Remarks**

The Stazione RN 2 suitcase set was developed and produced by Nova Radio in Milano for Italian intelligence during World War II. Like other Italian sets created for this purpose, it was a functional design copy of a German OKW Abwehr model—almost certainly the SE 96/30. However, the RN 2's electrical and mechanical construction differed considerably. Additional features included crystal control and combined tuning of the master oscillator and the RF power amplifier's anode circuit (the latter with separate fine-tuning). The RN 2 consisted of a transmitter (rasmettitore)RN 2) and a separate AC power unit A(limentatore)RN 2), both housed in a suitcase with a dedicated compartment for station accessories. It should be noted that the mechanical layout of the RN 2, compared to the SE 96/30, was not as readily distinguishable as, for example, the similarities between the RN 5 and the German Lo K39, or between the TXO-OC0 and the S 88/5. For further details, see the Italy section in WftW Volume 4. More than 20 years after the publication of WftW Volume 4, the long-known but elusive Stazione RN 2 was finally discovered—this example, still in excellent condition—at the Rover Joe Museum in Italy. Photographs taken by Alberto Campanini formed the basis of this chapter.

**Acknowledgments**

- Sincere thanks to Alberto Campanini (IZ4LWW), owner of the Rover Joe Museum, for providing photographs and detailed information about his RN 2.  
 - Photographs and circuit diagrams of the SE 96/30 were contributed by Rudolf Staritz, DL3CS (†).

**References**

- Collection 'Rover Joe' Museum, Via della Chiesa 8, 43036, Fidenza, Parma, Italy. Tel. +39 0524 524060, mail: info@roverjoe.com, www.roverjoe.com.  
 - La radio in grigio-verde, Mario Gelasso and Mario Gaticci, 1992, C&C, ISBN-978-8886622639.  
 - WftW Vol. 4, Supplement 356, SE 96/30.  
 - WftW Vol. 4, Supplement 333, E 75 receiver.  
 - Wireless for the Warrior Volume 4, Clandestine Radio, L. Meulstee, isbn 09522063 36 0, Wimborne Publishing Ltd., 2004.

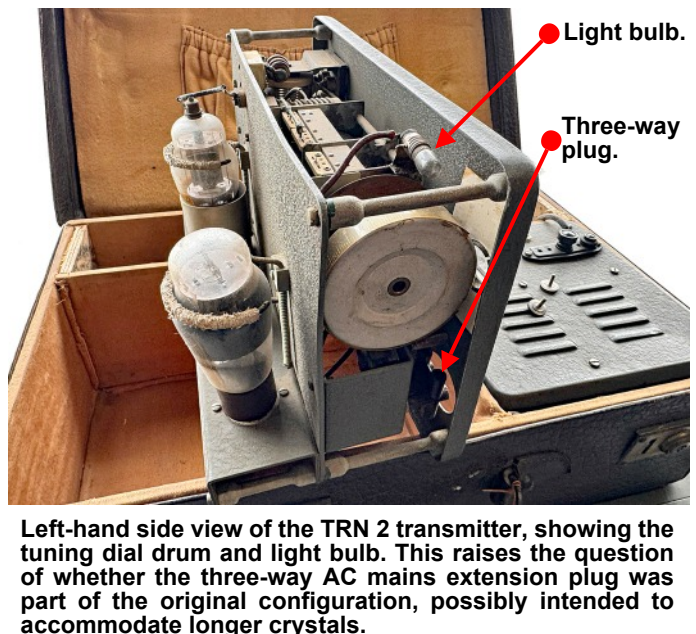
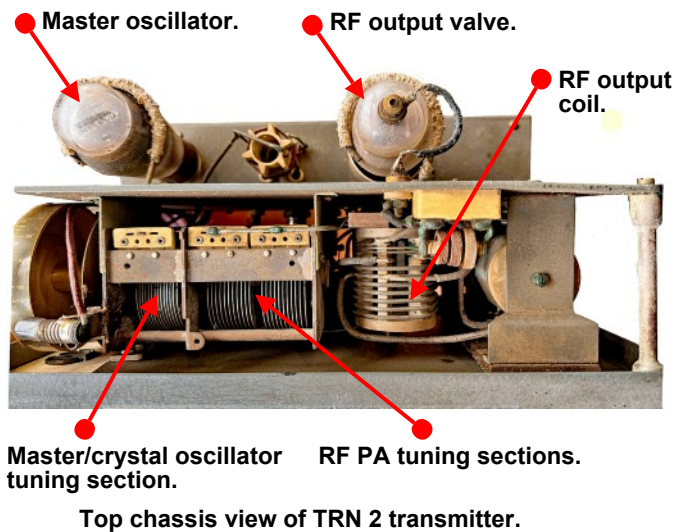
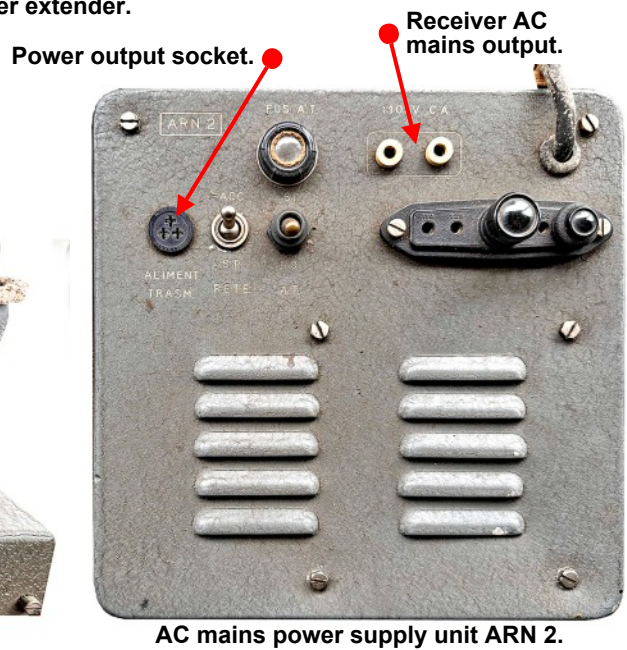
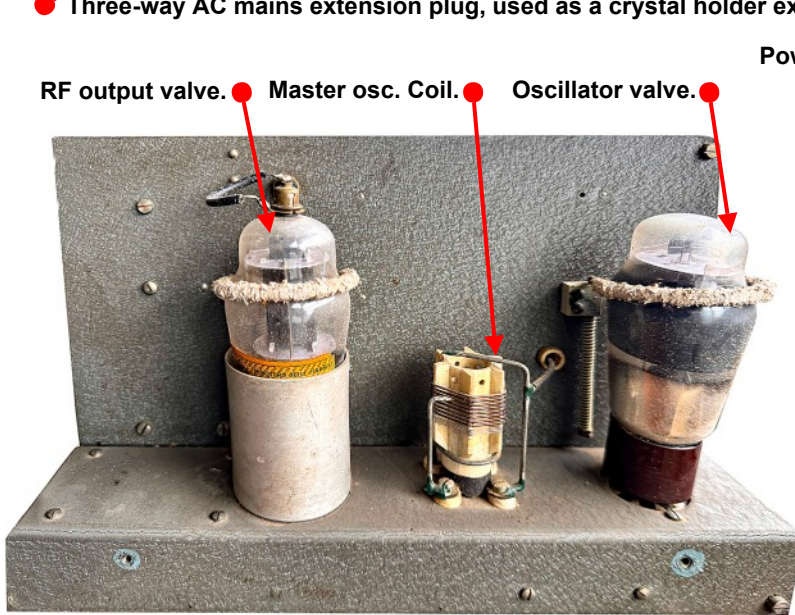
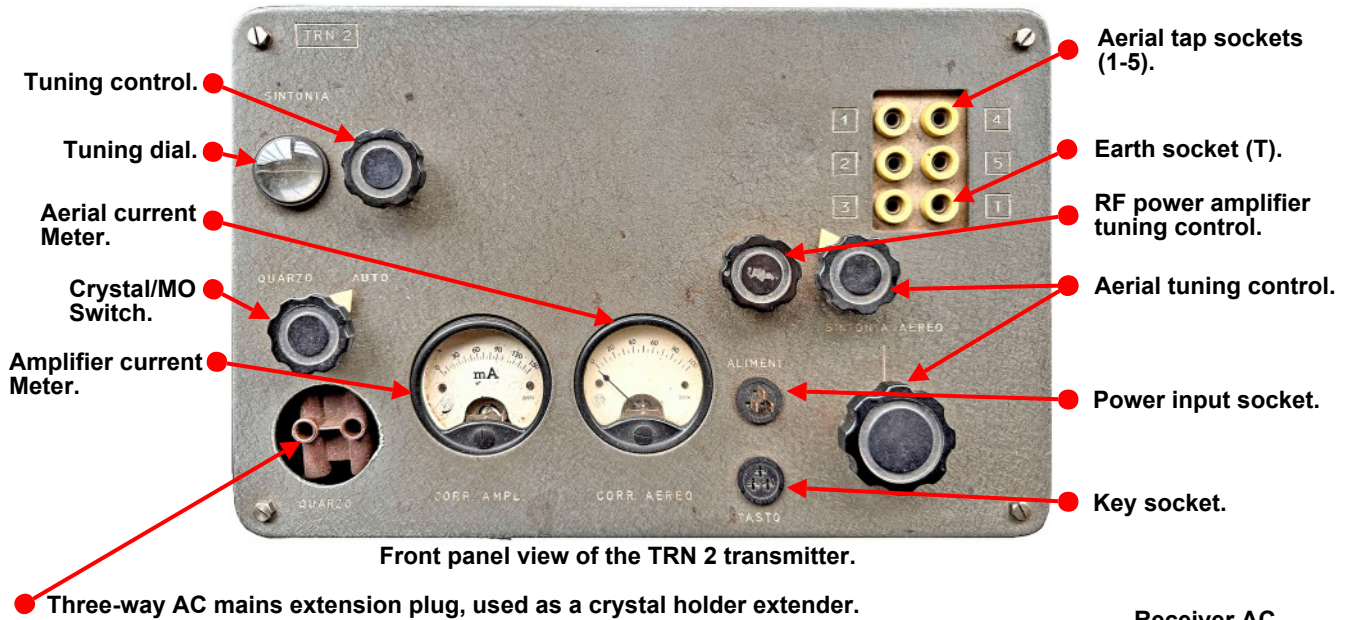
**The 'ROVER JOE' museum**

The Rover Joe Museum is a large exhibition featuring nearly 2,000 operational WWII radio devices, all collected, restored, and classified by Alberto Campanini (IZ4LWW) in Fidenza, Parma, Italy. The collection includes exceptionally rare items such as multiple models of the Enigma machine, Secret Service and counterintelligence equipment, radar systems, searchlights, and various types of radio gear from ships, submarines and aircraft.

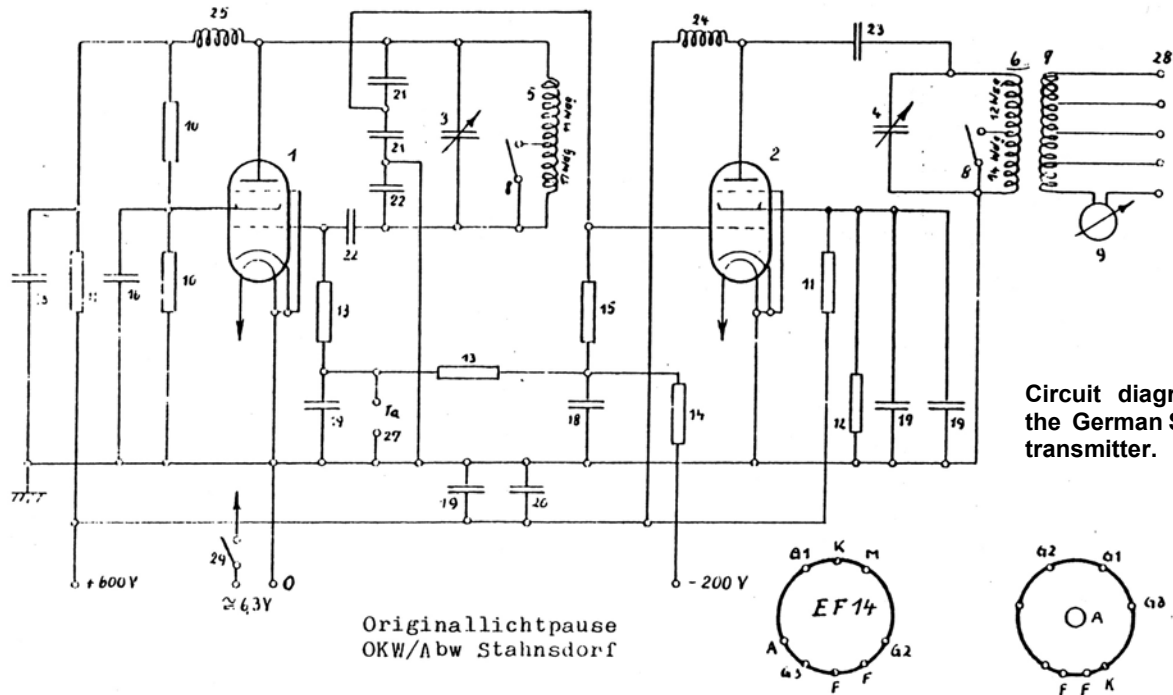
**One of the dioramas in the museum depicts a German radio station Fu 9 and an Enigma machine.**



An extensive array of fully functional radio vehicles rounds out the exhibition—including the iconic 'Rover Jo' jeep, the U.S. Army's first attempt to directly link ground forces with air support. New dioramas are introduced annually. The museum is open from June through October.



German Abwehr SE 96/30 (The TRN 2 was a functional design copy of this transmitter).

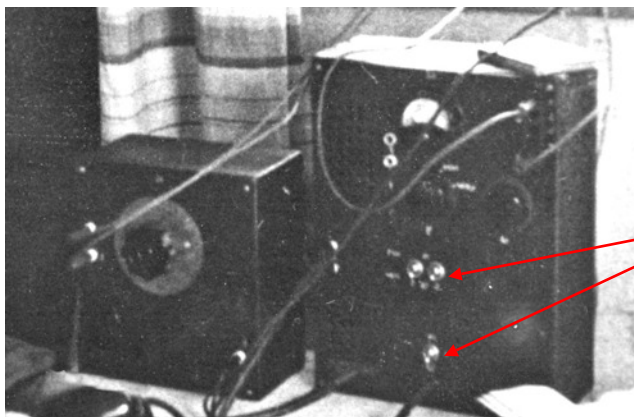
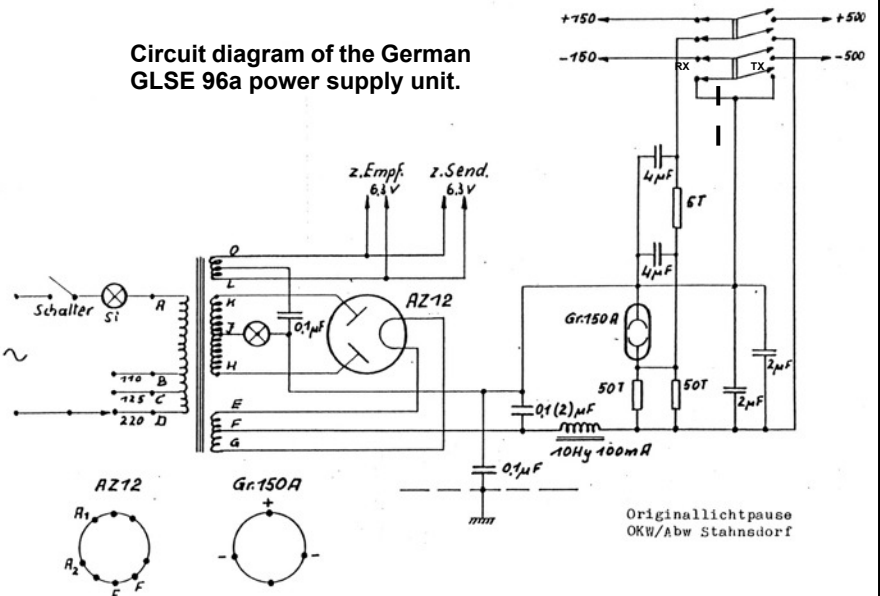


Circuit diagram of the German S 96/30 transmitter.

This circuit diagram illustrates the combined AC mains power supply unit, type GLSE 96a, developed for the SE 96 and its companion receiver, the E 96, which were designed for simplex operation only. It was later superseded by the 'b' model, which incorporated separate negative HT and 6.3V LT power sections, enabling break-in operation.

Other power units were also available for both the transmitter and the receiver. These variants could operate on either AC mains or DC power. For further information, refer to Wireless for the Warrior, Volume 4 Supplement, Chapter 356.

Circuit diagram of the German GLSE 96a power supply unit.



E 96 receiver.

SE 96/30 transmitter.

This is the only known photograph of the German Abwehr SE 96/30, featuring the E 96 receiver (left) and the S 96/30 transmitter (right).

Given the presence of three toggle switches and two pilot lamps on the power supply unit shown in the image, it is almost certain that the unit was a type GLSE 96a.

The E 96 receiver shared similarities with earlier models, E 75 and E 76. Its design was also adopted in the Italian receivers RRN-6, RN3, and—partially—in the TXO-OC3.